



AVC 025 SA, angle valve, manually actuated

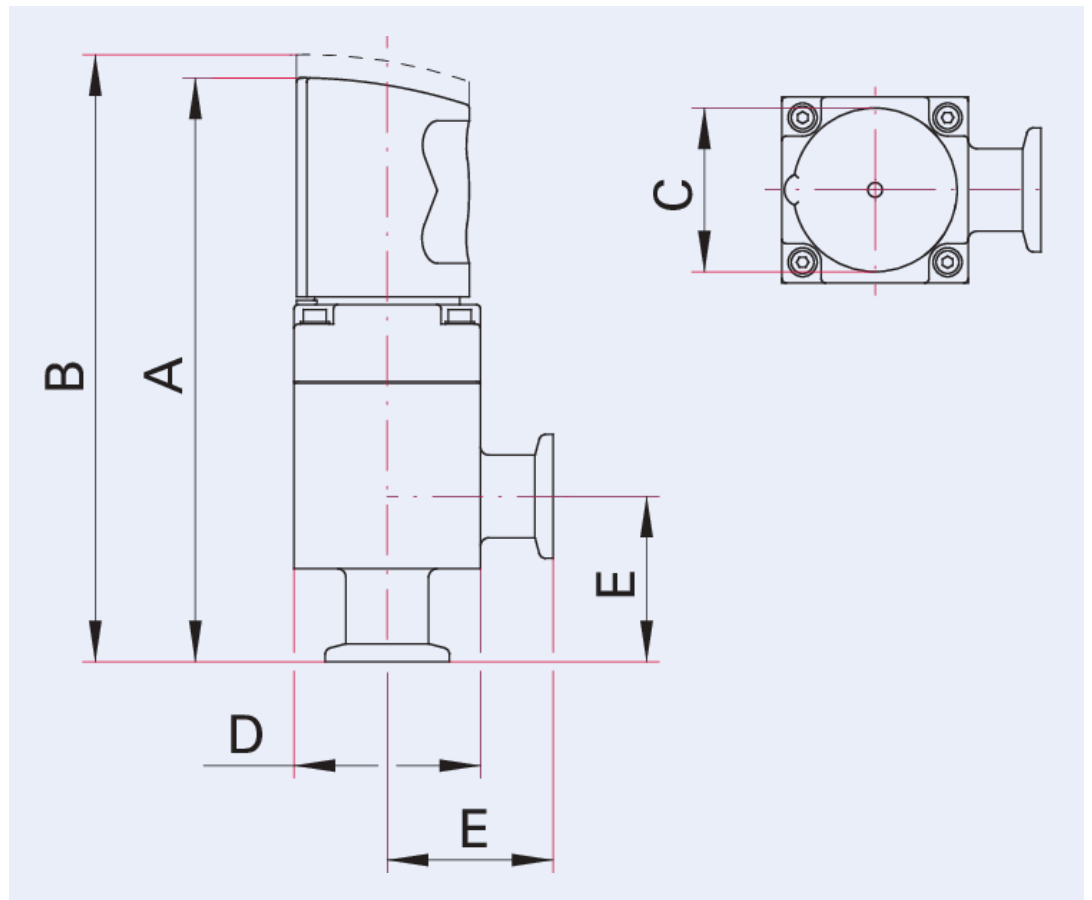




AVC 025 SA, angle valve, manually actuated

- Quick opening by partly turning the rotary knob
- Bellows-sealed
- With visual indication of open and closed positions
- Service life: 10,000 operating cycles
- The valve must always be fully opened/closed (locked)

Dimensions



Technical Data	AVC 025 SA, angle valve, manually actuated
Feedthrough	Stainless steel Bellows
Seal	FKM
Housing	Aluminum
Actuator	Quick opening & closing
Tightness	$1 \cdot 10^{-10}$ Pa m ³ /s $1.33 \cdot 10^{-8}$ Torr l/s $1 \cdot 10^{-8}$ mbar l/s
Bakeout temperature: actuator	50 °C 122 K -223.15 °F
Conductance value with molecular flow	14 l/s
Operating pressure min.	$1 \cdot 10^{-8}$ hPa $7.5 \cdot 10^{-9}$ Torr $1 \cdot 10^{-8}$ mbar
Pressure max. (absolute)	2,000 hPa 1,500 Torr 2,000 mbar
Bakeout temperature: housing	80 °C 176 K -193.2 °F
Differential pressure in closing direction	4,000 hPa 3,000 Torr 4,000 mbar
Differential pressure in opening direction	2,000 hPa 1,500 Torr 2,000 mbar
Weight	0.42 kg 0.93 lb
Operating pressure min.	$1 \cdot 10^{-8}$ hPa
Pressure max. (absolute)	2,000 hPa
Connection flange	DN 25 ISO-KF
Differential pressure in closing direction	4,000 hPa
Differential pressure in opening direction	2,000 hPa
Weight	0.42 kg

Order number	AVC 025 SA, angle valve, manually actuated
AVC 025 SA, angle valve, manually actuated	PF A41 003

Accessories	AVC 025 SA, angle valve, manually actuated
Set of seals for AVC/DVC valve, DN 25 ISO-KF	PT 130 301 -T
Corrugated bellows, complete for AVC/DVC valve, DN 25 ISO-KF	PT 130 304 -T

Your Success. Our Passion.

We give our best for you every day –
worldwide!

Are you looking for an optimum vacuum solution?

Talk to us:
Pfeiffer Vacuum GmbH
Germany
T +49 6441 802-0

Or scan the barcode, to visit our web page:



<https://webportal.pfeiffer-vacuum.com/global/en/contact>



Errors and/or changes excepted. - 5/29/2024

Follow Us On Social Media
#pfeiffervacuum



PFEIFFER  **VACUUM**

www.pfeiffer-vacuum.com